

[Home](#) ■ [Solutions](#) ■ [Sludge Treatment](#) ■ [Sludge Dewatering](#)

HUBER Solutions for Sludge Dewatering

Mechanical sludge dewatering serves for further reduction of sludge volume and mass by removal of sludge water from interstices between sludge particles. A more or less firm sludge cake is produced.

Prior to its dewatering, fed sludge is first flocculated by addition of polymers. The choice of polymer and its dosage as well as rapid and intensive mixing are decisive for optimal floc formation and dewatering results.

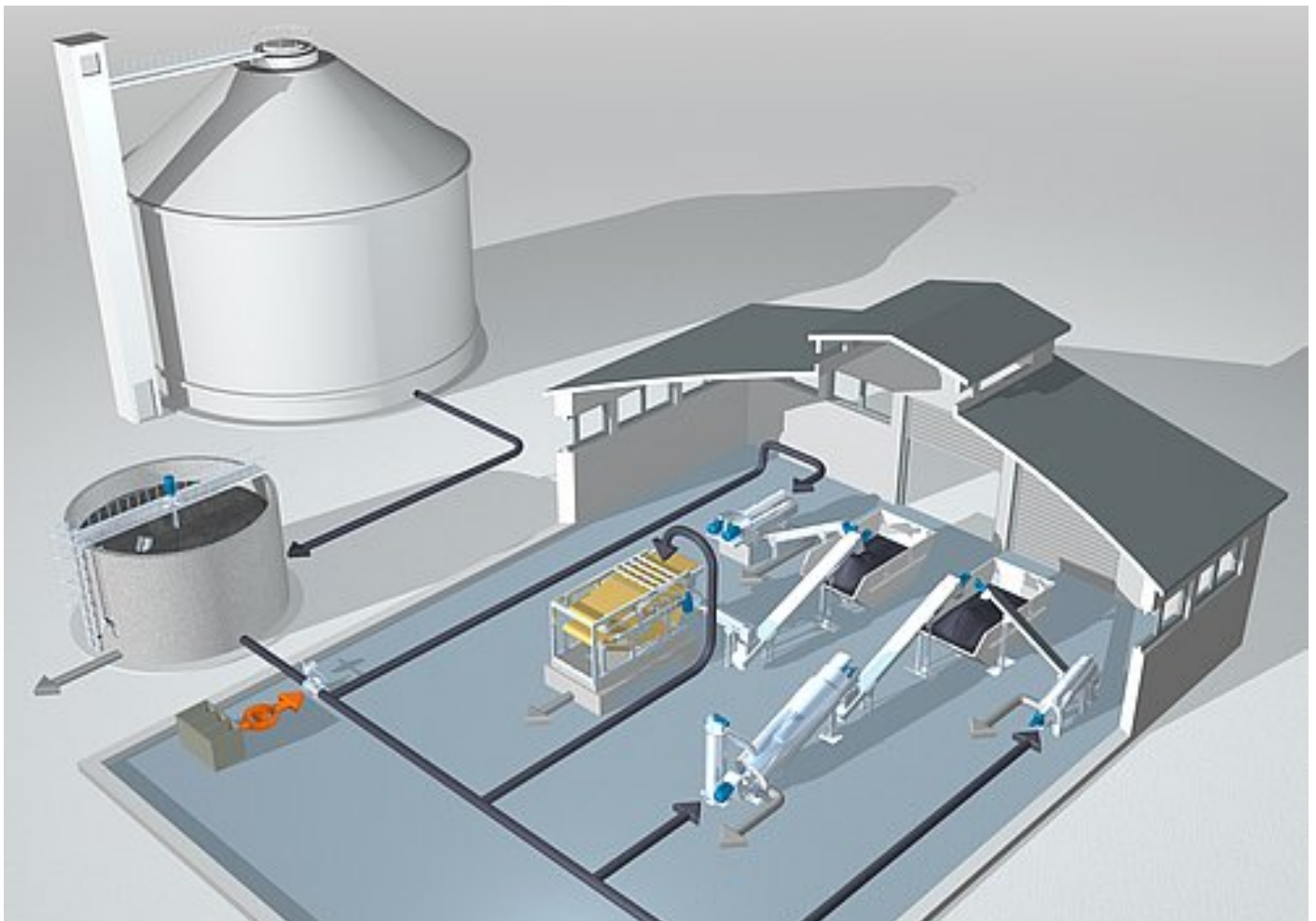
Filtering presses require a sludge that can take pressure and that does not blind the filter medium. Filtering presses are unsusceptible to sand and other mineral solids.

Decanting centrifuges are used if the sludge solids have a considerably higher specific weight than water. However, centrifuges are susceptible to abrasion by sand and other mineral solids.

We supply the following HUBER dewatering machines. They are all made of stainless steel, but differ by their design, size, capacity and performance. We offer the best solution for every application:

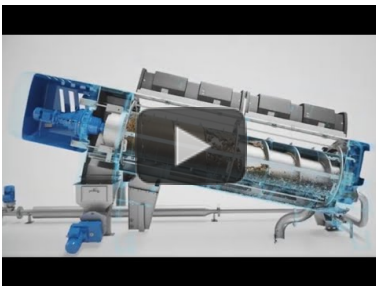
- [Small Screw Presses](#)
- [Large Screw Presses](#)
- [Belt Filter Presses](#)
- [Centrifuges](#)

Systems concept

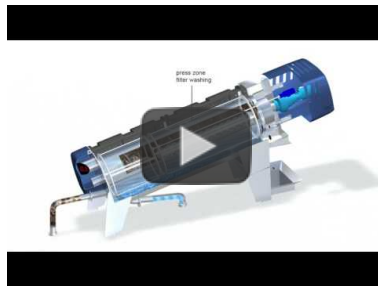


Click on the image to get a detailed, interactive view with additional information and links.

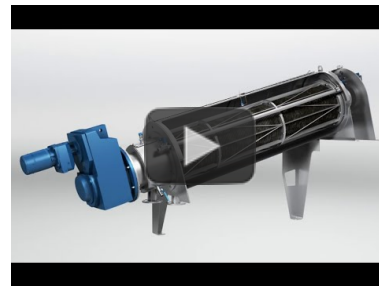
Photos



Animation: HUBER Sludge Dewatering
<https://www.youtube.com/watch?v=2bE1Kb5FApc>



Animation: Function and components of new HUBER Screw Press Q-PRESS@ 620, 800
<https://www.youtube.com/watch?v=t1dSGJYtCk>



Animation: Function and components of HUBER Screw Press Q-PRESS@ 440
https://www.youtube.com/watch?v=n_mnNdQsaCo



Video: HUBER Screw Press Q-PRESS@ - here at a municipal WWTP
<https://www.youtube.com/watch?v=5VsPNKbkJyA>



Video HUBER Screw Press Q-PRESS@ - here in beverage industry
<https://www.youtube.com/watch?v=T5sOUqy-zxk>

Case Studies

- [Sludge dewatering in a confectionery at Mondelez, Marlbrook](#)
- [Sludge dewatering with the HUBER Screw Press Q-PRESS@](#)
- [New TOTEX solution for Sludge Dewatering at Plymouth](#)
- [Dynamic inline mixer for optimized sludge dewatering](#)
- [HUBER's Screw Press Helps Cardston WWTP Make Positive Impact on Community](#)

- Q-PRESS® – The new HUBER Screw Press
- Screw Press replaces centrifuge: Successful operation of a HUBER Screw Press RoS3Q 440 on WWTP Gleißfeld
- Sludge Dewatering in a UK Creamery: A case study at Premier Food Ambrosia Creamery, Lifton / UK
- Cost-efficient, low wear: HUBER ROTAMAT® Screw Press RoS 3Q in Finland
- More than 96% sludge volume reduction: Big HUBER Screw Press units convince international customers
- New Screw Press size for high throughputs
- Racing technology for optimized sludge dewatering
- Efficient Sludge Treatment at Small Plants
- Small Screw Press RoS 3Q Exceeds all Expectations
- Screw Press RoS 3Q: New press size up to 100 000 PE

Products

- HUBER Screw Press S-PRESS
- HUBER Screw Press Q-PRESS®
- HUBER Bogenpress B-PRESS
- Centrifuges
- HUBER Screw Conveyor Ro8 / Ro8 T

Adresse / address: HUBER SE · Industriepark Erasbach A1 · 92334 Berching · Germany · Telefon / phone: + 49 - 84 62 - 201 - 0 · Fax / fax: + 49 - 84 62 - 201 - 810
e-mail: info@huber.de · Internet: <http://www.huber.de>

Sitz der Gesellschaft / Headquarters: Berching · AG Nürnberg / Register of companies: HRB 25558
Vorstand / Board: Georg Huber (Vorsitzender / CEO), Dr.-Ing. Oliver Rong (stellvertretender Vorsitzender / Vice CEO), Dr.-Ing. Johann Grienberger, Rainer Köhler
Aufsichtsratsvorsitzender / Chairman of the Supervisory Board: Alois Ponnath

USt (VAT)-IdNr.: DE 812353219

Bank: HypoVereinsbank Nürnberg (BLZ 760 200 70) 5 008 409 · SWIFT-BIC: HYVEDEMM460 · IBAN: DE 30 7602 0070 0005 0084 09

