

[Home](#) ■ [Products](#) ■ [Stainless Steel Equipment](#) ■ [Technical Doors](#) ■ [Windows](#)

Windows



Ready-to-install thermo-glass windows with special stainless steel profiles.

Available with rigid, hinged and reversible frame.

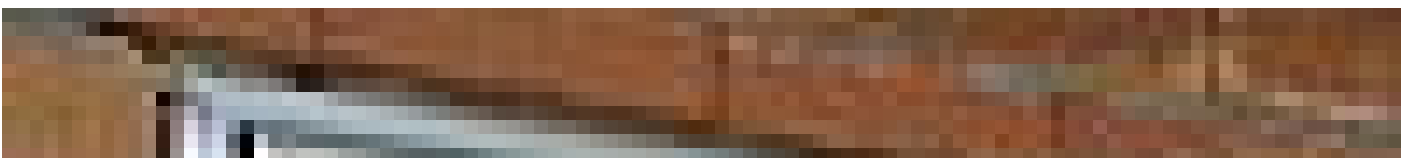
Universally applicable as light opening for buildings, especially for plants in the whole field of supply and disposal.

F1, designed to prevent thermal conduction Window with thermo glass, rigid F 1

Frame window, rigid, ready for installation, made from two-sheet special 1.4301 (AISI 304) stainless steel profile with intermediate special plastic core to prevent thermal conduction, thermally insulated according to DIN 4108, $U_f = 2.70 \text{ W}/(\text{m}^2\cdot\text{K})$. Flush-fitting glazing bead, invisibly fastened.



Window with thermo glass and hinged frame F2





Frame window, rigid, ready for installation, made from two-sheet special 1.4301 (AISI 304) stainless steel profile with intermediate special plastic core to prevent thermal conduction, thermally insulated according to DIN 4108, $U_f = 2.70 \text{ W}/(\text{m}^2\text{K})$.

Window with thermo glass and reversible frame F3



Casement window, swivel window, ready for installation, made from two-sheet special 1.4301 (AISI 304) stainless steel profile with intermediate special plastic core to prevent thermal conduction, thermally insulated according to DIN 4108, $U_f = 2.70 \text{ W}/(\text{m}^2\text{K})$, special galvanized fittings, stainless steel handle set.

Window with thermo glass and reversible hinged frame F4

Casement window, tilt and turn window, ready for installation, made from two-sheet special 1.4301 (AISI 304) stainless steel profile with intermediate special plastic core to prevent thermal conduction, thermally insulated according to DIN 4108, $U_f = 2.70 \text{ W}/(\text{m}^2\text{K})$, special galvanized fittings, stainless steel handle set.



Download Documents

Here you will find extensive planning documents and customer information.

For quick and easy download, all documents of a product are packed together into one complete ZIP file:

- [Rigid window F1](#)
- [Window with thermo glass and hinged frame F2](#)
- [Window with thermo glass and reversible frame F3](#)
- [Window with thermo glass and reversible hinged frame F4](#)

More products of this group: Technical Doors

- [Stainless Steel Doors](#)
- [Safety Door](#)
- [Chlorine Room Door](#)
- [Flood-proof Door](#)
- [Pressure-tight Door](#)
- [Access/Inspection Cover](#)
- [Louvre](#)

Case Studies

- [Water reservoir Talstraße renovated](#)

Adresse / address: HUBER SE · Industriepark Erasbach A1 · 92334 Berching · Germany · Telefon / phone: + 49 - 84 62 - 201 - 0 · Fax / fax: + 49 - 84 62 - 201 - 810
e-mail: info@huber.de · Internet: <http://www.huber.de>

Sitz der Gesellschaft / Headquarters: Berching · AG Nürnberg / Register of companies: HRB 25558
Vorstand / Board: Georg Huber (Vorsitzender / CEO), Dr.-Ing. Oliver Rong (stellvertretender Vorsitzender / Vice CEO), Dr.-Ing. Johann Grienberger, Rainer Köhler
Aufsichtsratsvorsitzender / Chairman of the Supervisory Board: Alois Ponnath

USt (VAT)-IdNr.: DE 812353219

Bank: HypoVereinsbank Nürnberg (BLZ 760 200 70) 5 008 409 · SWIFT-BIC: HYVEDEMM460 · IBAN: DE 30 7602 0070 0005 0084 09



