

➤➤ Insertable entrance aid EH S



The figure shown here may contain special accessories

Insertable entrance aid, with design certification in accordance with DIN 19572, made of 1.4307 (AISI 304 L) stainless steel, for safety access ladders with 300 mm, 400 mm, 500 mm width.

Overall length: 1200 mm.

Entrance aid in accordance with DIN 19572.

Access ladders must have a handhold at their exit. This requirement is deemed to be fulfilled if one or both handles of a ladder project at least 1.1m beyond the exit height.

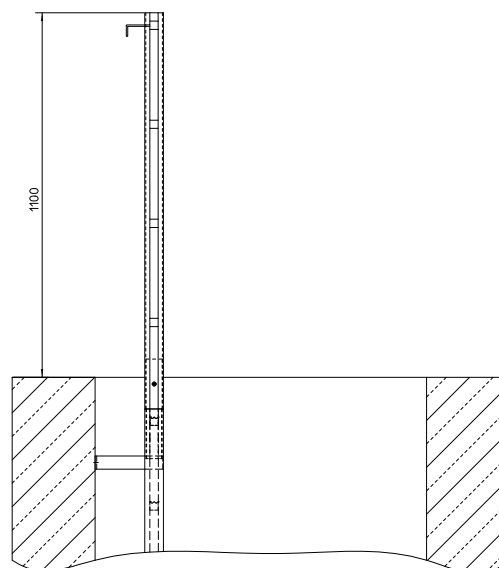
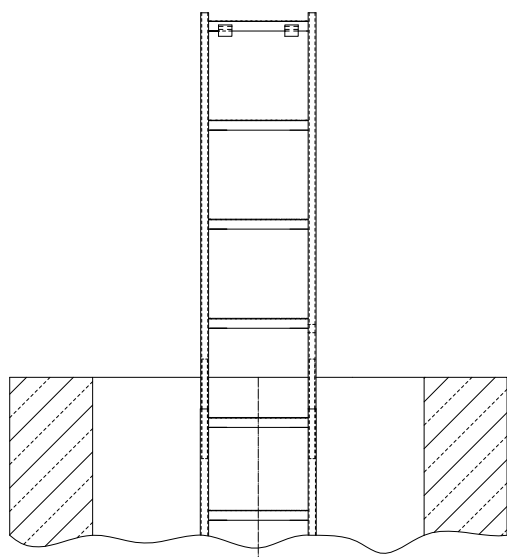
Ladder width = _____ mm.

The insertable entrance aid has hooks welded on so that it can be hung onto the top rung and remain inside the manhole.

Completely shielded arc welded, acid-treated in a pickling bath and passivated.

Options:

- 1.4404 (AISI 316 L) stainless steel



HUBER SE

Industriepark Erasbach A1 · D-92334 Berching
Telefon: +49-84 62-201-0 · Fax: +49-84 62-201-810
info@huber.de · Internet: www.huber.de

Subject to technical modification
Drawing no. 190.148/4, 5.2022

Insertable entrance aid EH S