

➤➤ **Fold-back, extensible entrance aid EH KV**



The figure shown here may contain special accessories

Fold-back, extensible entrance aid, with design certification in accordance with DIN 19572, made of 1.4307 (AISI 304 L) stainless steel, for safety access ladders with 300 mm, 400 mm, 500 mm width.

Entrance aid in accordance with DIN 19572.

Access ladders must have a handhold at their exit. This requirement is deemed to be fulfilled if one or both handles of a ladder project at least 1.1 m beyond the exit height.

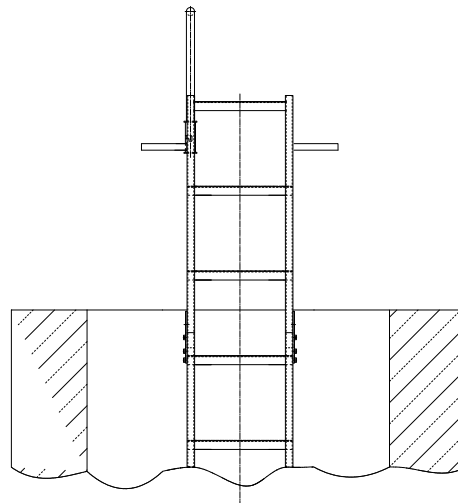
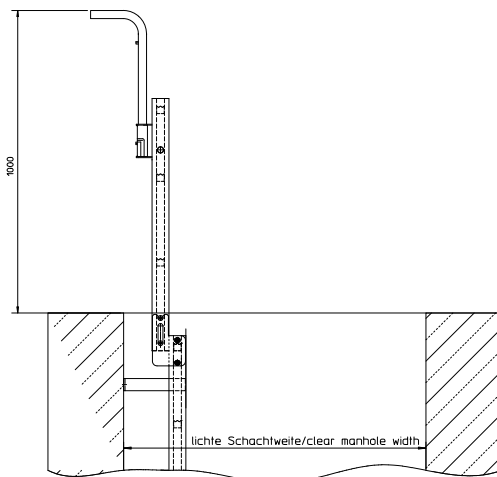
Manhole width = _____ mm. [Minimum manhole width required: > 800 mm. With round manhole entrances it is only possible for 300 mm wide access ladders].

Completely shielded arc welded, acid-treated in a pickling bath and passivated.

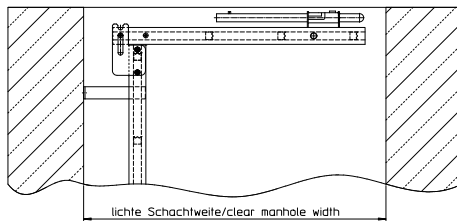
Options:

- 1.4404 (AISI 316 L) stainless steel

aufgeklappter Zustand / fold out



umgeklappter Zustand / fold back



HUBER SE

Industriepark Erasbach A1 · D-92334 Berching
 Phone: + 49 - 84 62 - 201 - 0 · Fax: + 49 - 84 62 - 201 - 810
 info@huber.de · Internet: www.huber.de

Subject to technical modification
 Drawing no. 190.148/3, 5.2022

Fold-back, extensible entrance aid EH KV