

## ►► Watertight manhole cover SD6

**Up to 1 m head of water, round, completely made of stainless steel**

**Manhole cover**, watertight up to 1 m head of water, round in shape, completely made of 1.4301/1.4307 (AISI 304 L) stainless steel, in accordance with DIN 1239 standards.

**The cover** is made of stainless steel plate, with a centrally raised profile, with robust, external hinges, with stainless steel gas assisted spring damper, with integrated arrestor which can only be undone by hand, with circumferential, frost-proof rubber seal fixed in a slot, a central lock, with a protective hood of brass, which can only be opened with a special key.

**Frame** consisting of angle section 50/50 mm for wall fixing, incl. fixing material and gasket strip.

Manhole cover and frame shielded arc-welded, acid-treated in a pickling bath and passivated.

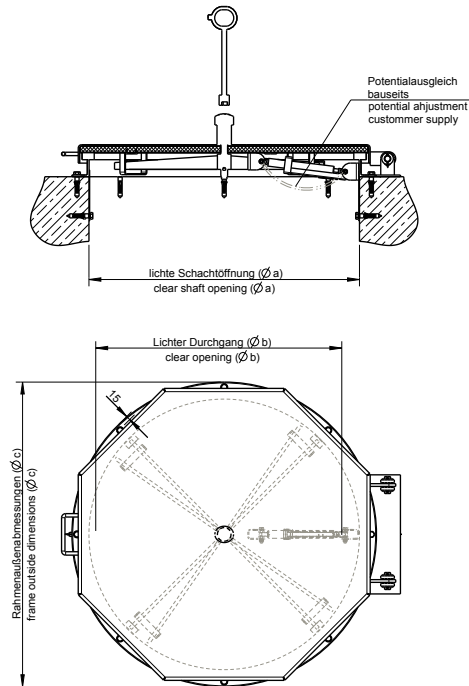
Operating key included.

### **Options:**

- Safety lock for increased security
- Unscrewable air vent
- Safety guard / antifaall guard
- 1.4571/1.4404 (AISI 316 L) stainless steel

### **Special version:**

Additional insulation of the cover, polyurethane hard foam, CFC-free, with bottom protection plate made of stainless steel Application in plants in contact with ozone



Model	Size $\varnothing a$	Order no.	Inside pass $\varnothing b$	Frame outside dimensions $\varnothing c$	Weight approx. kg
Standard model, round	600	106/RÜ (1)	525	695	29
Standard model, round	800	108/RÜ	725	895	44
Standard model, round	1000	101/RÜ	925	1095	60
Standard model, round (2)	600	106/IRÜ (1)	525	695	36
Standard model, round (2)	800	108/IRÜ	725	895	56
Standard model, round (2)	1000	101/IRÜ	925	1095	78

Ask for further dimensions. All measurements in mm.

(1) Note: According to German standards GUV-V C5 "Abwassertechnische Anlagen" and DVGW Arbeitsblatt W122 "Abschlußbauwerke für Brunnen der Wassergewinnung", the minimum clear width of entrance openings must be 0.8 m.

(2) with additional insulation of Polyurethan hard foam without FCKW, protected with stainless steel plate on the bottom side.

## HUBER SE

Industriepark Erasbach A1 · D-92334 Berching  
Phone: + 49 - 84 62 - 201 - 0 · Fax: + 49 - 84 62 - 201 - 810  
info@huber.de · Internet: www.huber.de

Subject to technical modification  
Drawing No. 50740457, 10.2015

Watertight manhole cover SD6