

►► Watertight manhole cover SD5

Up to 1 m head of water, square, completely made of stainless steel

Manhole cover, watertight up to 1 m head of water, square in shape, completely made of 1.4301/1.4307 (AISI 304 L) stainless steel, in accordance with DIN 1239 standards.

The cover is made of stainless steel plate, with a centrally raised profile, with robust, external hinges, with stainless steel gas assisted spring damper, with integrated arrestor which can only be undone by hand, with circumferential, frost-proof rubber seal fixed in a slot, a central lock, with a protective hood of brass, which can only be opened with a special key.

Frame consisting of angle section 80/50 mm for wall fixing, incl. fixing material and gasket strip.

Manhole cover and frame shielded arc-welded, acid-treated in a pickling bath and passivated.

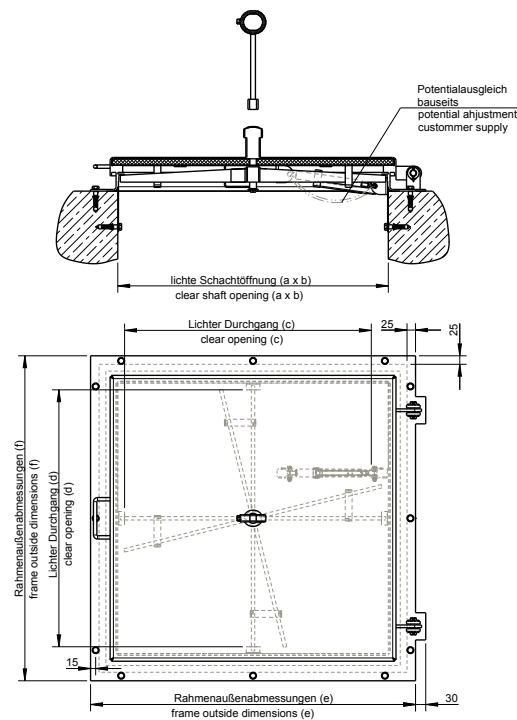
Operating key included.

Options:

- Safety lock for increased security
- Unscrewable air vent
- Safety guard / antiffall guard
- 1.4571/1.4404 (AISI 316 L) stainless steel

Special version:

Additional insulation of the cover, polyurethane hard foam, CFC-free, with bottom protection plate made of stainless steel Application in plants in contact with ozone



Model	Size a x b	Order no.	Inside pass c x d	Frame outside dimensions e x f	Weight approx. kg
Standard model, square	600 x 600	166/Ü (1)	525 x 555	785 x 755	29
Standard model, square	800 x 800	188/Ü	725 x 755	985 x 955	44
Standard model, square	1000 x 1000	111/Ü	925 x 955	1185 x 1155	62
Standard model, square (2)	600 x 600	166/IÜ (1)	525 x 555	785 x 755	36
Standard model, square (2)	800 x 800	188/IÜ	725 x 755	985 x 955	57
Standard model, square (2)	1000 x 1000	111/IÜ	925 x 955	1185 x 1155	79

Ask for further dimensions. All measurements in mm.

(1) Note: According to German standards *GUV-V C5 "Abwassertechnische Anlagen"* and *DVGW Arbeitsblatt W122 "Abschlußbauwerke für Brunnen der Wassergewinnung"*, the minimum clear width of entrance openings must be 0.8 m.

(2) with additional insulation of Polyurethan hard foam without FCKW, protected with stainless steel plate on the bottom side.

HUBER SE

Industriepark Erasbach A1 · D-92334 Berching
Phone: + 49 - 84 62 - 201 - 0 · Fax: + 49 - 84 62 - 201 - 810
info@huber.de · Internet: www.huber.de

Subject to technical modification
Drawing No. 50740237, 10.2015

Watertight manhole cover SD5