

➤➤ Manhole cover SD4, security tested, weatherproof, attack-proof

Round, completely made from stainless steel

Manhole cover, weatherproof and secure to prevent forced access, certified by the university of Karlsruhe to security class 3, round in shape, load-bearing up to 5 t, with additional concealed frame, completely made of 1.4301/1.4307 (AISI 304 L) stainless steel, in accordance with DIN 1239.

The cover consisting of a stainless steel plate, with a centrally raised profile, 4 mm thick, with stainless steel gas assisted spring dampers, integrated arrestor which can only be undone by hand, self-retracting lock, standard safety lock which can only be opened with a cylinder key.

The coverframe consists of an angle section, on which the cover is fitted on robust, inner hinges, with a circumferential, insect-proof and totally weather-proof rubber seal.

Concealed frame consisting of an angle shape, concealed with robust wall clamps, designed for embedding in concrete; cover frame and concealed frame are bolted together on the inner flanges in order to prevent unauthorized removal of the cover. Between the concealed frame and cover frame there is a weatherproof rubber seal.

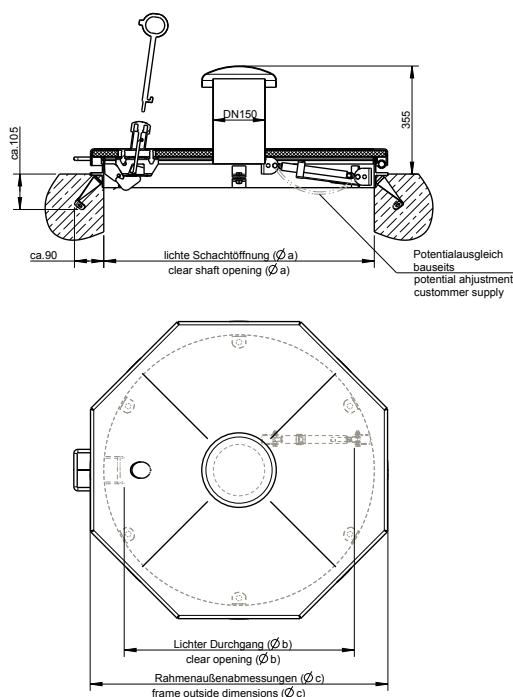
Manhole cover and frame shielded arc-welded, acid-treated in a pickling bath and passivated.

Operating key included.

Options:

- Air vent DN 150
- Insulation of the cover, without FCKW
- Air vent DN 150 and insulation of the cover, without FCKW
- Replacabable pollen filter
- Energy-independent solar ventilation
- Safety guard / antifall guard
- Emergency escape cover (to be opened manually)
- Tubular biofilter within the ventilating chimney for odour elimination
- 1.4571/1.4404 (AISI 316 L) stainless steel





Model	Size $\varnothing a$	Order no.	Inside pass $\varnothing b$	Frame outside dimensions $\varnothing c$	Weight approx. kg
A Standard model	600	106/GRS (1)	495	680	35
A Standard model	800	108/GRS	695	880	50,5
A Standard model	1000	101/GRS	895	1080	71
B with air vent DN 150	600	106/GDRS (1)	495	680	38,7
B with air vent DN 150	800	108/GDRS	695	880	54
B with air vent DN 150	1000	101/GDRS	895	1080	74
C with insulation of cover, without FCKW	600	106/IRS (1)	495	680	40,5
C with insulation of cover, without FCKW	800	108/IRS	695	880	59,5
C with insulation of cover, without FCKW	1000	101/IRS	895	1080	81
D with air vent DN 150 and insulation of cover, without FCKW	600	106/IDRS (1)	495	680	43,5
D with air vent DN 150 and insulation of cover, without FCKW	800	108/IDRS	695	880	62
D with air vent DN 150 and insulation of cover, without FCKW	1000	101/IDRS	895	1080	84,5

Ask for further dimensions. All measurements in mm.

(1) Note: According to German standards GUV-V C5 "Abwassertechnische Anlagen" and DVGW Arbeitsblatt W122 "Abschlußbauwerke für Brunnen der Wassergewinnung", the minimum clear width of entrance openings must be 0.8 m.

HUBER SE

Industriepark Erasbach A1 · D-92334 Berching
Phone: + 49 - 84 62 - 201 - 0 · Fax: + 49 - 84 62 - 201 - 810
info@huber.de · Internet: www.huber.de

Subject to technical modification
Drawing No. 50739779, 10.2015

Manhole cover SD4, security tested,
weatherproof, attack-proof