

►► Weatherproof manhole cover SD1, Reckenberg model

Square type, completely stainless steel

Manhole cover, rainproof, square type, completely 1.4301/1.4307 (AISI 304 L) stainless steel, according to DIN 1239

The cover is made of stainless steel plate, with a centrally raised profile, inner cross bracing for rigidity, self-retracting lock which can be opened with a special key, two stainless steel gas assisted spring dampers (short type 650N), with integrated self-retracting arrestor which can only be undone by hand, guided by a non-detachable U-profile (the spring damper holder is full penetration welded on three sides). With a circumferential insect-proof rubber seal (frost-proof and weather-resistant), replaceable, clamped in a groove in the cover. Insulation of the cover, polyurethane hard foam, CFC-free, with bottom protection plate made of stainless steel. A special method is applied to inject the hard foam in liquid form into the cover to ensure the space is filled completely without any gaps. With handle as help for opening mounted in the middle of the cover. With angles welded on to subsequently receive a magnetic contact, including fixing screws.

Frame consisting of 90 mm angle section, flanged on both sides, with four vertically welded on clips provided for **bolted fixing** inside the shaft as lift lock (one dowelling clip on each side), with three boreholes for bolted fixing on each frame side. With two additional frame fixings in the section of the two gas-assisted spring dampers.

Manhole cover and frame shielded arc-welded, acid-treated in a pickling bath and passivated. This pickling method ensures that all cavities are reached and optimal corrosion protection is guaranteed.

Operating key and fixing material included.

Note:

Refer to our installation instructions.

To ensure the cover remains stormwater-tight, the sealing surface needs to be cleaned with a cloth prior to closing the cover to remove sand, dust, stones and similar material.

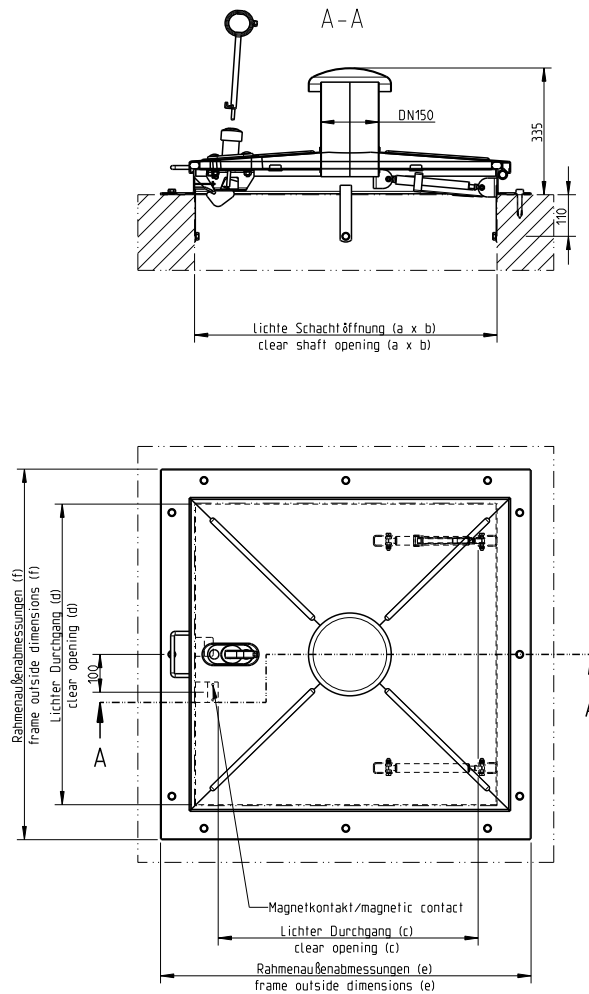
Options:

- Air vent DN 150
- Replaceable pollen filter
- Magnetic contact
- Safety guard / antiffall guard
- Safety lock for increased security
- Energy-independent solar ventilation
- Tubular biofilter within the ventilating chimney for odour elimination
- Emergency escape cover (to be opened manually)
- 1.4571/1.4404 (AISI 316 L) stainless steel
- Fire-service standard lock, for pillar hydrant key DIN 32232, M 12 (supplied without key)

Special design:

Multi-part cover

- with firmly welded cross bar
- with dismountable cross bar
- with hinged cross bar



Model	Size \varnothing a	Order no.	Inside pass c x d	Frame outside dimensions e x f	Weight approx. kg
With insulation of cover, without FCKW	1000 x 1000	111/I-ED	995 x 886	1180 x 1180	42
With air vent DN 150 and insulation of cover, without FCKW	1000 x 1000	111/ID-ED	995 x 886	1180 x 1180	45
With insulation of cover, without FCKW	800 x 800	188/I-ED	795 x 686	980 x 980	37
With air vent DN 150 and insulation of cover, without FCKW	800 x 800	188/ID-ED	795 x 686	980 x 980	40

Ask for further dimensions. All measurements in mm.

(1) Note: According to German standards GUV-V C5 "Abwassertechnische Anlagen" and DVGW Arbeitsblatt W122 "Abschlußbauwerke für Brunnen der Wassergewinnung", the minimum clear width of entrance openings must be 0.8 m.

HUBER SE

Industriepark Erasbach A1 · D-92334 Berching
Phone: + 49 - 84 62 - 201 - 0 · Fax: + 49 - 84 62 - 201 - 810
info@huber.de · Internet: www.huber.de

Subject to technical modification
Drawing No. 50716664, 10.2015

Weatherproof manhole cover SD1,
Reckenberg model