

➤➤ Channel cover SD11

Rectangular, completely made from stainless steel

Channel cover, completely made of 1.4301/1.4307 (AISI 304 L) stainless steel, in accordance with DIN, pedestrian bearing up to 6 (15) kN, or load bearing up to 150 kN.

Cover segment consisting of stainless steel tear pattern plate, slip resistance R11 in compliance with DIN 51130, variable lengths, according to local conditions.

The frame consists of angle section, with wall clamps, for embedding in concrete or dowelling (for dowelling only up to a load of 6 kN and 15 kN).

Manhole cover and frame shielded arc-welded, acid-treated in a pickling bath and passivated.

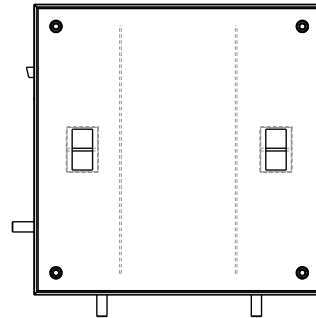
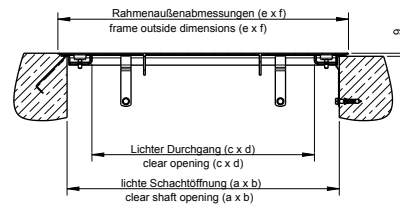
Options:

- 1.4571/1.4404 (AISI 316 L) stainless steel
- Channel cover, ditto, however weatherproof and odour-tight, with an additional rubber seal and bolting

Please submit a construction drawing with your order.

Variante/Version I:
Rahmen wird einbetoniert
frame for embedding in concrete

Variante/Version II:
Rahmen wird angedübelt
frame for bolted fixing



Model	Size a x b	Order no.	Inside pass c x d	Frame outside dimensions e x f
walkable 6 kN with/without rubber seal	600 x 600	266/6 (1)	470 x 470	670 x 670
walkable 6 kN with/without rubber seal	800 x 800	288/6	670 x 670	870 x 870
walkable 6 kN with/without rubber seal	1000 x 1000	211/6	870 x 870	1070 x 1070
walkable 15 kN with/without rubber seal	600 x 600	266/15 (1)	470 x 470	670 x 670
walkable 15 kN with/without rubber seal	800 x 800	288/15	670 x 670	870 x 870
walkable 15 kN with/without rubber seal	1000 x 1000	211/15	870 x 870	1070 x 1070
walkable 150 kN with/without rubber seal	600 x 600	266/150 (1)	470 x 470	670 x 670
walkable 150 kN with/without rubber seal	800 x 800	288/150	670 x 670	870 x 870
walkable 150 kN with/without rubber seal	1000 x 1000	211/150	870 x 870	1070 x 1070

Ask for further dimensions. All measurements in mm.

(1) Note: According to German standards GUV-V C5 "Abwassertechnische Anlagen" and DVGW Arbeitsblatt W122 "Abschlußbauwerke für Brunnen der Wassergewinnung", the minimum clear width of entrance openings must be 0.8 m.

HUBER SE

Industriepark Erasbach A1 · D-92334 Berching
Phone: + 49 - 84 62 - 201 - 0 · Fax: + 49 - 84 62 - 201 - 810
info@huber.de · Internet: www.huber.de

Subject to technical modification
Drawing No. 50743553, 10.2015

Channel cover SD11