

## ►► Round Access Cover TT8a with screwed joints

**Maintenance opening, especially for the field of potable water supply, pressure-tight up to a water gauge of 5 m.**



*The figure shown here may contain special accessories*

**Access cover**, pressure-tight up to a water gauge of 5 m, ready for installation, round, completely made from 1.4307 (AISI 304 L) stainless steel, with intermediate sealing suitable for the specific application, can be lined on both sides.

**Blank cover** with lock and two handles for easy operation, connected with the frame by means of screwed joints.

**Frame**, designed as F-piece with centrally welded wall flange, provided for embedding in concrete. Frame with lifting eyes.

Blank cover and frame shielded arc-welded and acid bath cleaned before washing, drying and surface passivation.



*The figure shown here may contain special accessories*

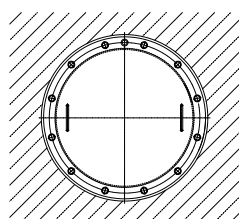
### Options:

- 1.4404 (AISI 316 L) stainless steel
- Centrally installed inspection window, inside diameter: 150 mm, with or without window wiper
- Sanding of frame parts in contact with concrete
- Stable maintenance-free hinges screwed to the frame, can be lined on both sides. (Please indicate the door opening option.)

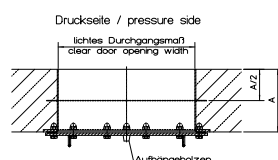
### Application:

- Drinking water (KTW certified sealing)
- Wastewater (rubber seal SBR)
- Biogas (rubber seal EPDM E628 70 ± 5 Shore)

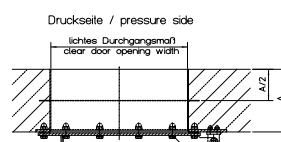
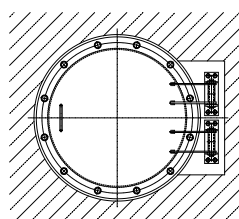
Mannloch - Standard Ausführung/  
Access cover - standard version



Available with a clear opening of 600 mm or 800 mm



Mannloch - Sonder Ausführung mit Schamier/  
Access cover - special version with hinge



**HUBER SE**

Industriepark Erasbach A1 · D-92334 Berching  
Telefon: +49-84 62-201-0 · Fax: +49-84 62-201-810  
info@huber.de · Internet: www.huber.de

Subject to technical modification  
Drawing No. 190.171/1, 5.2022

Round Access Cover TT8a with Screwed Joints