

## ➤➤ Sliding hatch cover SD12



*The figure shown here may contain special accessories*

**Sliding hatch cover**, completely made of 1.4307 (AISI 304 L) stainless steel, with smooth finish.

**The cover** is made of a stable stainless steel plate and equipped with plastic rollers and maintenance-free journal bearings. The cover is installed in an external guide rail and cannot be removed. Locking when closed is possible by a cylindrical lock.

**The rails** consist of 60/40/2 mm rectangular section fixed with dowels along the rail edge.

Manhole cover and rails shielded arc-welded, acid-treated in a pickling bath and passivated.

Operating key included.

Dimensions according to individual requirements

Available options:

A) straight version

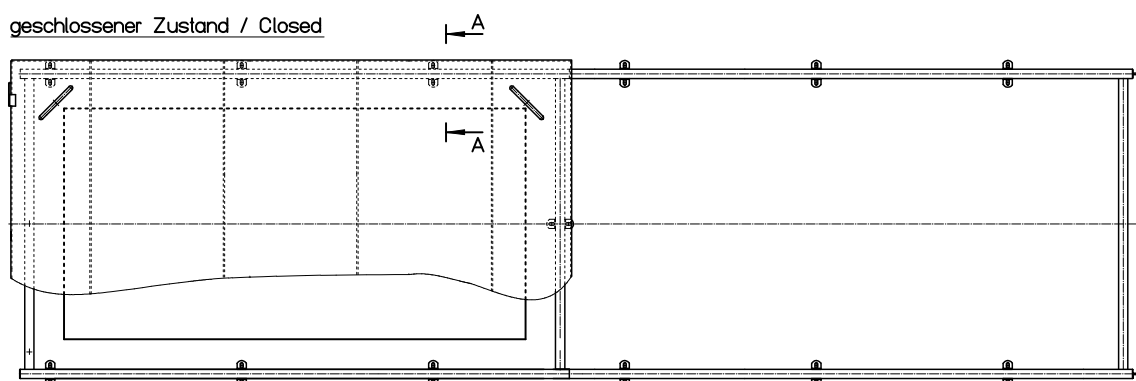
B) circular version

The sliding cover provides access to downward leading stairs.

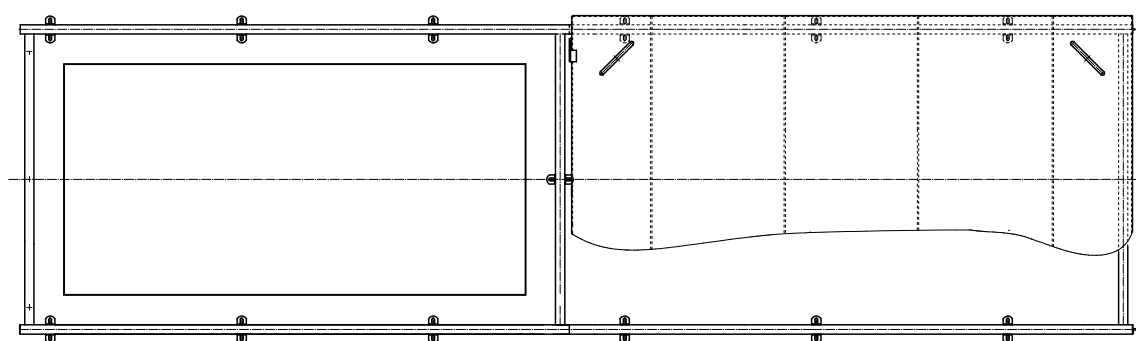
### **Options:**

- 1.4404 (AISI 316 L) stainless steel
- Special design available on request

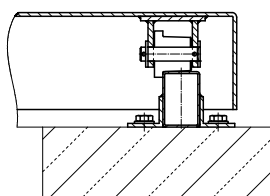
geschlossener Zustand / Closed



geöffneter Zustand / Open



Schnitt: A-A  
section: A-A



## HUBER SE

Industriepark Erasbach A1 · D-92334 Berching  
Telefon: +49-84 62-201-0 · Fax: +49-84 62-201-810  
info@huber.de · Internet: www.huber.de

Subject to technical modification  
Drawing no. 190.459, 5.2022

Sliding hatch cover SD12