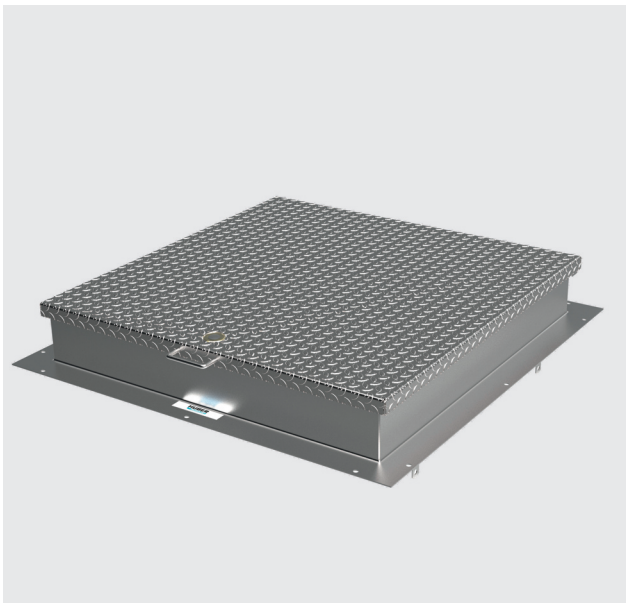


➤➤ Manhole cover SD50, weather-proof, rectangular type



The figure shown here may contain special accessories

Manhole cover, weatherproof, rectangular in shape, completely made of 1.4307 (AISI 304 L) stainless steel, in accordance with DIN 1239, suitable for use in Ex zone 1.

The cover consists of a stainless steel checkered plate, with flush-mounted screw closure, as standard with hardened safety lock (the profile cylinder to be provided by the customer), with handle, stainless steel gas-assisted spring dampers with integrated arrester which can only be undone by hand; robust, concealed hinges. Replaceable, insect-proof rubber seal attached to the underside of the cover for low wear. Load-bearing up to 5 kN. A connection for potential equalisation is provided.

The frame consists of a Z-profile, with a height of 150 mm; ventilation openings are incorporated in the frame, covered at the back with insect-proof stainless steel mesh. Frame support width 80 mm, prepared for bolted fixing through the frame, with additional lift-off protection inside the shaft.

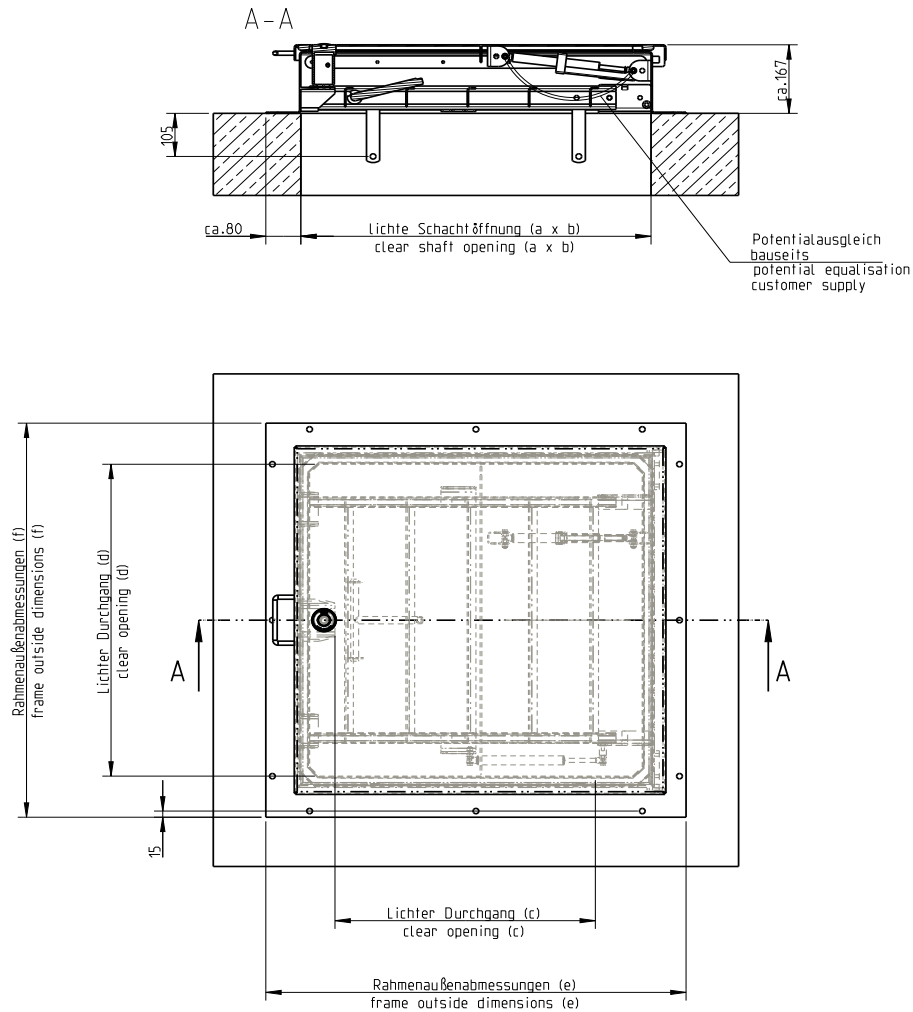
The guard grate is made of angle profile, load-bearing up to 200 kg, integrated in the frame, flush with lower edge of frame (up to 1000 mm projection), with hinges and gas pressure springs for easy opening and closing; the guard grate and cover folding in the same direction.

Manhole cover, antfall guard and frame shielded arc-welded, acid-treated in a pickling bath and passivated.

Operating key included.

Options:

- 1.4404 (AISI 316 L) stainless steel
- Without ventilation openings
- Insulation of the cover, CFC-free
- Fixing material and foam rubber gasket
- Non-standard sizes
- Cover plate 4 mm smooth sheet metal
- Magnetic contact (cover open/shut indicator)
- Lacquer according to RAL colour chart
- Multi-part cover



Model	Size a x b	Order no.	Inside pass c x d	Frame outside dimensions e x f
Standard model	800 x 800		598 x 796	960 x 960
Standard model	1000 x 1000		798 x 996	1160 x 1160

Ask for further dimensions. All measurements in mm.

HUBER SE

Industriepark Erasbach A1 · D-92334 Berching
Phone: + 49 - 84 62 - 201 - 0 · Fax: + 49 - 84 62 - 201 - 810
info@huber.de · Internet: www.huber.de

Subject to technical modification
Drawing no. 51617212, 5.2022

Manhole cover SD50, weather-proof,
rectangular type