

## ➤➤ Insettable entrance aid EH S



The figure shown here may contain special accessories

**Insettable entrance aid**, with design certification in accordance with DIN 19572, made of 1.4307 (AISI 304 L) stainless steel, for safety access ladders with 300 mm, 400 mm, 500 mm width.

Overall length: 1200 mm.

Entrance aid in accordance with DIN 19572.

Access ladders must have a handhold at their exit. This requirement is deemed to be fulfilled if one or both handles of a ladder project at least 1.1m beyond the exit height.

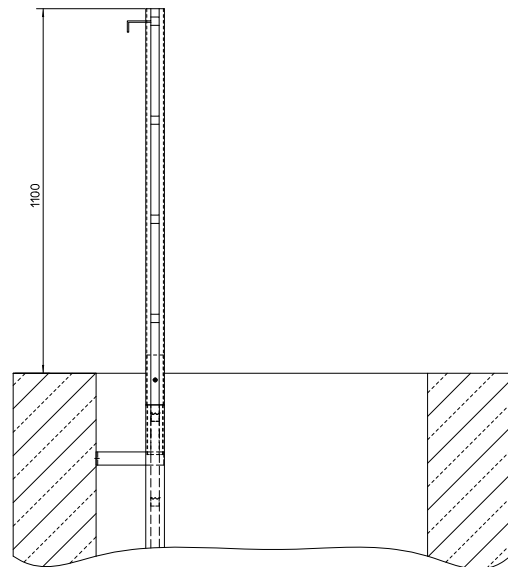
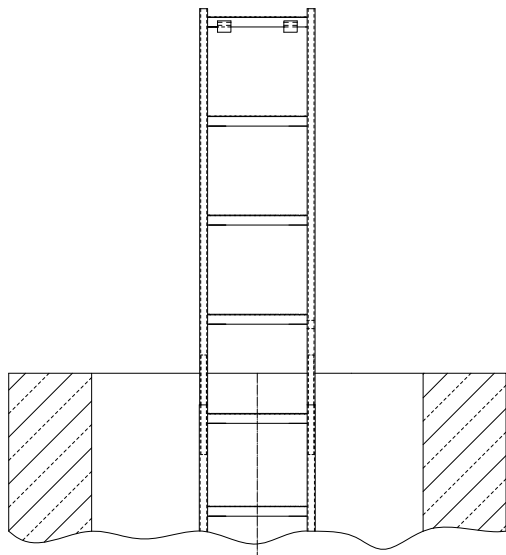
Ladder width = \_\_\_\_\_ mm.

The insettable entrance aid has hooks welded on so that it can be hung onto the top rung and remain inside the manhole.

Completely shielded arc welded, acid-treated in a pickling bath and passivated.

### Options:

- 1.4404 (AISI 316 L) stainless steel



## HUBER SE

Industriepark Erasbach A1 · D-92334 Berching  
Phone: + 49 - 84 62 - 201 - 0 · Fax: + 49 - 84 62 - 201 - 810  
info@huber.de · Internet: www.huber.de

Subject to technical modification  
Drawing no. 190.148/4, 5.2022

Insettable entrance aid EH S