

## ➤➤ Fold-back entrance aid EH K



The figure shown here may contain special accessories

**Fold-back entrance aid**, made of 1.4307 (AISI 304 L) stainless steel, for safety access ladders with 300 mm, 400 mm, 500 mm width.

In accordance with DIN 3620.

**Note:** The 1.1 m projection required according to DIN 19572 is not achieved with this design variant of the entrance aid.

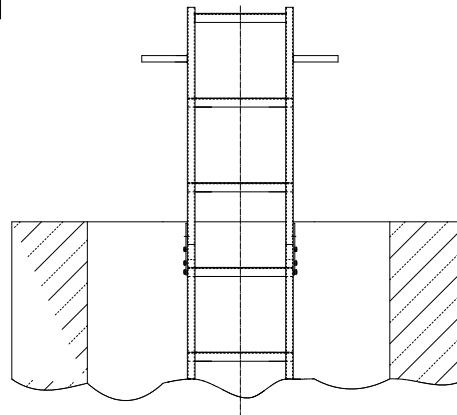
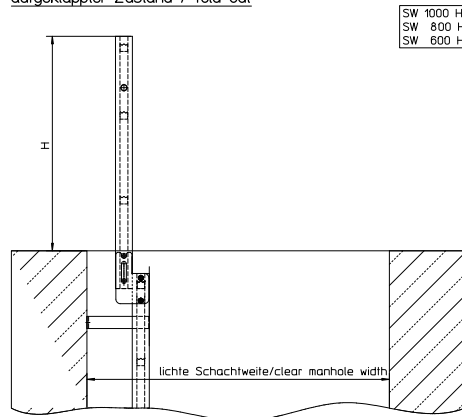
Manhole width = \_\_\_\_\_ mm [with round manhole entrances only possible for 300 mm wide access ladders].

Completely shielded arc welded, acid-treated in a pickling bath and passivated.

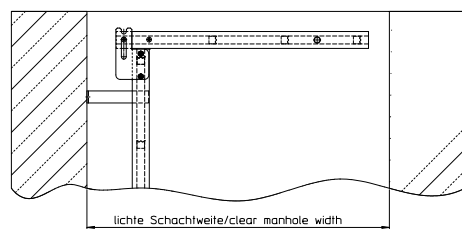
### Options:

- 1.4404 (AISI 316 L) stainless steel

aufgeklappter Zustand / fold out



umgeklappter Zustand / fold back



# HUBER SE

Industriepark Erasbach A1 · D-92334 Berching  
 Phone: + 49 - 84 62 - 201 - 0 · Fax: + 49 - 84 62 - 201 - 810  
 info@huber.de · Internet: www.huber.de

Subject to technical modification  
 Drawing no. 190.148/2, 5.2022

Fold-back entrance aid EH K