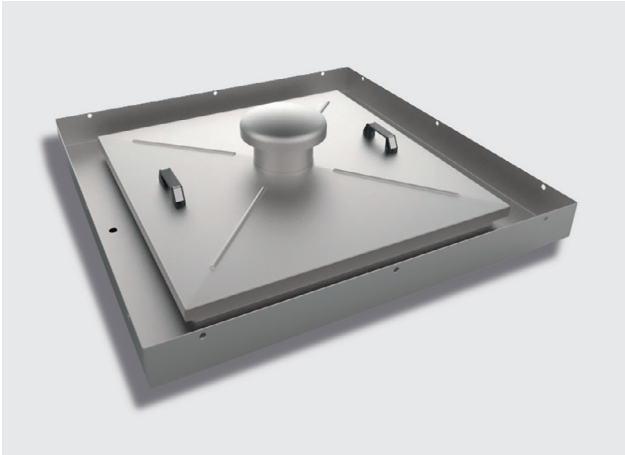


➤➤ Catch basin CT for manhole covers



The figure shown here may contain special accessories

Catch basin, rectangular in shape, made of 1.4307 (AISI 304 L) stainless steel, universally applicable, for retrofitting under manhole covers as protection against ingress of harmful chemicals, liquid or similar substances into the manhole.

Custom-made to suit the specific local conditions.

The cover is made of stainless steel plate, with a centrally raised profile, removable, with two handles.

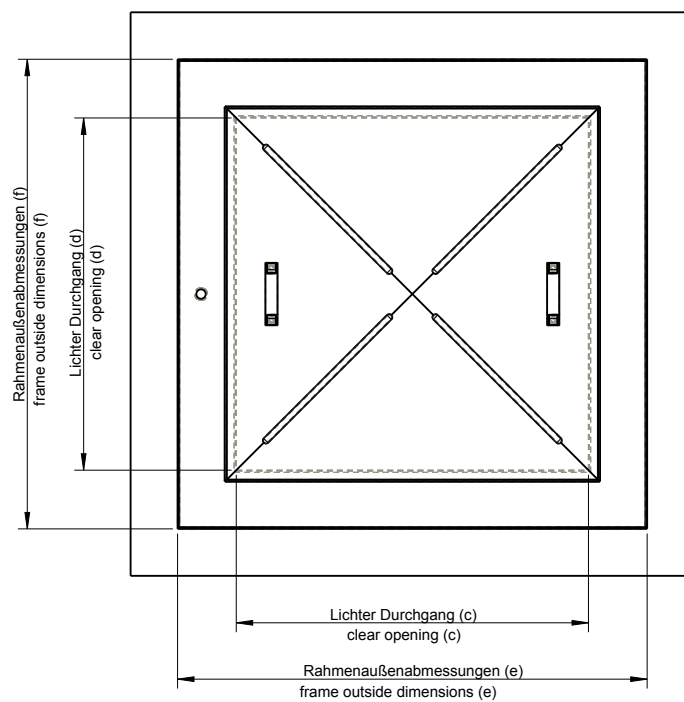
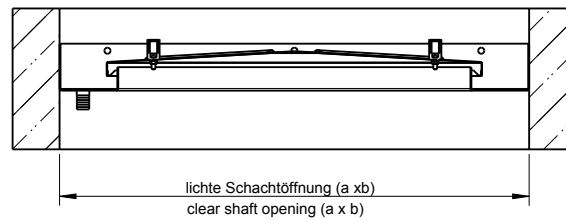
The frame consists of an angle section designed as an outlet channel, provided for bolted fixing inside the manhole under the manhole cover, with integrated $\frac{3}{4}$ " hose nozzle, for on-site connection to an outlet pipe. Fixing material and drinking water approved silicone as sealing between the wall and frame included.

Cover and frame shielded arc-welded and acid bath cleaned before washing, drying and surface passivation.

Options:

- 1.4404 (AISI 316 L) stainless steel
- Air vent DN 150
- Lockable version

A-A



Model	Clear manhole opening a x b	Order no.	Inside pass c x d	Frame outside dimensions e x f
Catch basin CT	800 x 800	CT G 800x800	550 x 550	795 x 795
Catch basin CT	1000 x 1000	CT G 1000x1000	750 x 750	995 x 995

Ask for further dimensions. All measurements in mm.

HUBER SE

Industriepark Erasbach A1 · D-92334 Berching
 Phone: + 49 - 84 62 - 201 - 0 · Fax: + 49 - 84 62 - 201 - 810
 info@huber.de · Internet: www.huber.de

Subject to technical modification
 Drawing no. 51130307, 5.2022

Catch basin CT for manhole covers