

►► Weatherproof manhole cover, load bearing Up to 15/125/ 400 kN, round type SD7.R

Round, load tested in accordance with DIN 1229, completely made from stainless steel

Manhole cover, weatherproof, load bearing, load tested in accordance with DIN 1229 / EN 124, 15 / 125 / 400 kN, completely made from 1.4301/1.4307 stainless steel, for flush fitting, not suitable for big volume traffic.

The cover consists of a stainless steel tear pattern plate, with additional bracing on the bottom, according to the weight, slip resistance R 13, with a rubber seal on the cover bottom side, with screw lock, with safety lock, can only be undone with special keys, inner hinges, additional help for opening in the form of stainless steel gas assisted spring dampers, with integrated arrestor which can only be undone by hand and allows easy opening of the cover by one person.

Bottom covering angle frame with external wall clamps provided for embedding in concrete (concrete up to upper frame edge).

Manhole cover and frame shielded arc-welded, acid-treated in a pickling bath and passivated.

Operating key included.

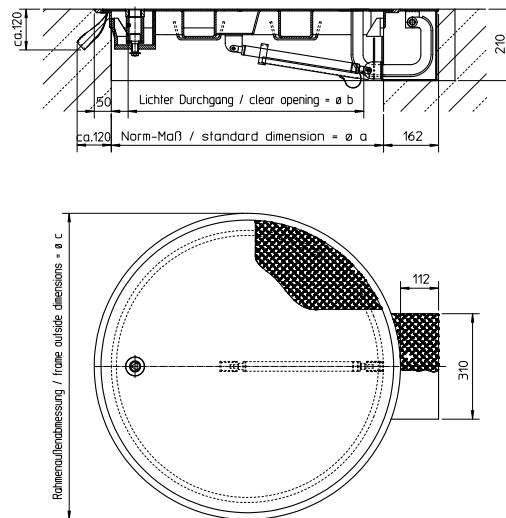
Note:

Refer to our installation instructions.

To ensure the cover remains stormwater-tight, the sealing surface has to be cleaned with a cloth prior to closing the cover to remove sand, dust, stones and similar material.

Options:

- Easy-to-install encasing frame for a thickness of _____ mm
- Multiple screw connection, suitable for big-volume traffic (no emergency exit possible)
- Prepared for installation into paving or tar, class A and B (according to customer's specification)
- Magnetic contact
- Cover insulation
- Reduced installation height (57 mm)
- Safety guard / antipall guard
- Emergency escape cover (to be opened manually)
- 1.4571/1.4404 stainless steel



Model	Size $\varnothing a$	Order No.	Inside pass $\varnothing b$	Frame outside dimensions (without hinge box) $\varnothing c$	Weight approx. Kg
Type A: 15 kN equal 1,5 t (1)	$\varnothing 800$	ED 208/15-GR	$\varnothing 730$	$\varnothing 900$	54
Type A: 15 kN equal 1,5 t (1)	$\varnothing 1000$	ED 201/15-GR	$\varnothing 930$	$\varnothing 1100$	72
Type B: 125 kN equal 12,5 t (2)	$\varnothing 800$	ED 208/125-GR	$\varnothing 700$	$\varnothing 900$	82
Type B: 125 kN equal 12,5 t (2)	$\varnothing 1000$	ED 201/125-GR	$\varnothing 900$	$\varnothing 1100$	106
Type D: 400 kN equal 40 t (3)	$\varnothing 800$	ED 208/400-GR	$\varnothing 700$	$\varnothing 900$	92
Type D: 400 kN equal 40 t (3)	$\varnothing 1000$	ED 201/400-GR	$\varnothing 900$	$\varnothing 1100$	137

Ask for further dimensions. All measurements in mm. (1) Für Grünflächen und Flächen, die nicht als Verkehrsflächen gelten, jedoch gelegentlich begangen werden. (2) Für Gehwege und vergleichbare Flächen, für PKW-Parkhäuser. (3) Für Fahrbahnen von Straßen, Parkflächen und befestigte Verkehrsflächen, nicht für fließenden Verkehr geeignet.

HUBER SE

Industriepark Erasbach A1 · D-92334 Berching
Phone: + 49 - 84 62 - 201 - 0 · Fax: + 49 - 84 62 - 201 - 810
info@huber.de · Internet: www.huber.de

Subject to technical modification
Drawing No. 190.382, 8.2010

Weatherproof manhole cover, load bearing Up to
15/125/400 kN, round type SD7.R