

➤➤ Sliding hatch cover SD12

Completely made from stainless steel

Sliding hatch cover, completely made of 1.4301/1.4307 stainless steel, pedestrian bearing, with smooth finish.

The cover is made of a strong stainless steel plate and equipped with plastic rollers, maintenance-free journal bearings, operable by one person. The cover is installed in an external guide rail and cannot be removed. Locking when closed is possible by a cylindrical lock.

The rails consist of 60/40/2 mm rectangular section fixed with dowels along the rail edge.

Manhole cover and rails shielded arc-welded, acid-treated in a pickling bath and passivated.

Operating key included.

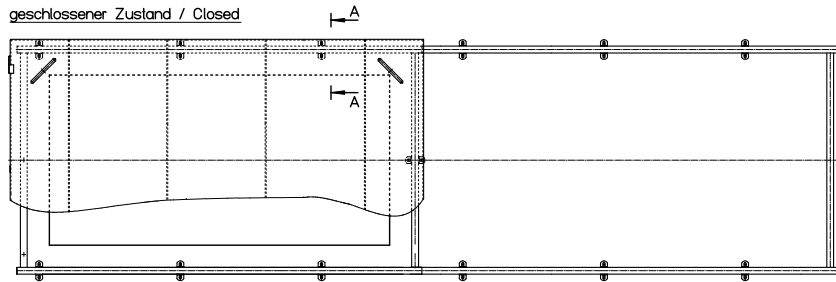
Dimensions according to individual requirements.

Available options:

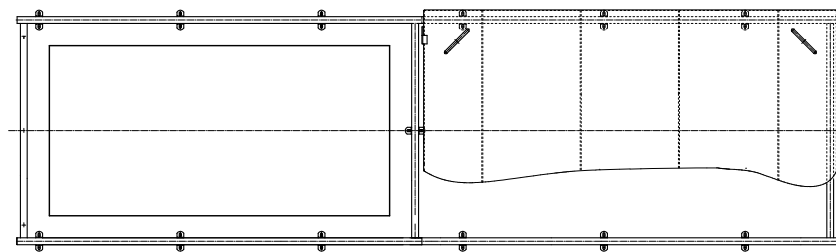
- A) straight version
- B) circular version

The sliding cover provides access to downward leading stairs.

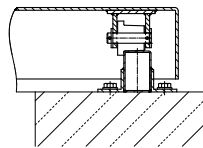
geschlossener Zustand / Closed



geöffneter Zustand / Open



Schnitt: A-A
section: A-A



HUBER SE

Industriepark Erasbach A1 · D-92334 Berching
Phone: + 49 - 84 62 - 201 - 0 · Fax: + 49 - 84 62 - 201 - 810
info@huber.de · Internet: www.huber.de

Subject to technical modification
Drawing No. 190.459, 8.2010

Sliding hatch cover SD 12